

Name \_\_\_\_\_

N° \_\_\_\_\_

Surname \_\_\_\_\_

# **NATURAL SCIENCE**

## **THE CLASSIFICATION OF LIVING THINGS II**

SAMPLE

## THE CLASSIFICATION OF LIVING THINGS II

In this unit we are going to learn about:

1. The Fungi Kingdom
  - Characteristics
  - Mushrooms
  - Fungi and people: beneficial fungi, harmful Fungi
2. The Protist Kingdom
  - Characteristics
  - Algae
  - Protozoa/amoeba
3. The Monera Kingdom
  - Characteristics
  - Bacteria

### Science Investigators

Are bacteria good or bad for you?

Can fungi be used to produce food?

Do you know that fungi can grow in your body?

What is penicillin?

Can you see bacteria with your eyes?

Have you ever eaten algae?

Why are fungi important for plants?

Are algae plants?



Do you have any other questions? Write them down and let's find the answer

-  
-

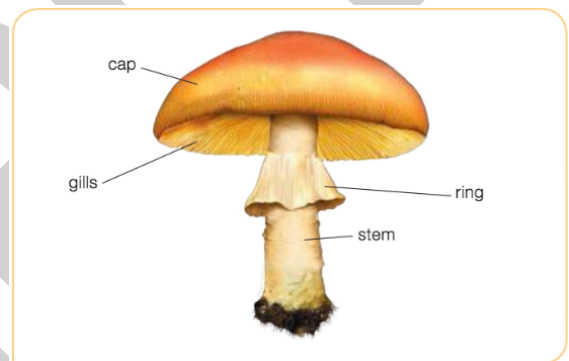
# 1. THE FUNGUS KINGDOM

Fungi have the following characteristics:

- ✓ They can be **unicellular** (yeasts) or **multicellular** (mushrooms and moulds).
- ✓ Like plants, fungi **can't move** about and many of them grow in soil.
- ✓ Like animals, fungi can't make their own food. They obtain the nutrients they need from the **remains of dead plants and animals (heterotrophs)**. They produce a substance which breaks down plant and animal matter.
- ✓ They can be found not only on the ground, but also on pieces of wood or on decomposing food.

## MUSHROOMS

Some fungi produce **mushrooms**. A mushroom is the only the visible part of a fungus. The main part of these fungi grows **beneath the soil**, and can be several kilometers long! In autumn and spring, the fungi grow above the ground as mushrooms so that they can **reproduce**. The main parts of a mushroom are the **cap**, the **gills**, the **ring** and the **stem**.



## FUNGI AND PEOPLE

Many fungi are beneficial to people, but others can be harmful.

### ➤ BENEFICIAL FUNGI

- ✓ Some fungi can produce **edible** mushrooms.
- ✓ Some **medicines**, like penicillin, are produced by fungi.
- ✓ **Blue cheese** is made from mould; **bread** is made from yeast.



### ➤ HARMFUL FUNGI

- ✓ Some fungi can produce **poisonous** mushrooms, which can be deadly.
- ✓ **Athlete's foot** is an infection caused by a fungus.



**SAMPLE**

## UNIT VOCABULARY

1. \_\_\_\_\_ - \_\_\_\_\_

2. \_\_\_\_\_ - \_\_\_\_\_

3. \_\_\_\_\_ - \_\_\_\_\_

4. \_\_\_\_\_ - \_\_\_\_\_

5. \_\_\_\_\_ - \_\_\_\_\_

6. \_\_\_\_\_ - \_\_\_\_\_

7. \_\_\_\_\_ - \_\_\_\_\_

8. \_\_\_\_\_ - \_\_\_\_\_

9. \_\_\_\_\_ - \_\_\_\_\_

10. \_\_\_\_\_ - \_\_\_\_\_

11. \_\_\_\_\_ - \_\_\_\_\_

12. \_\_\_\_\_ - \_\_\_\_\_

13. \_\_\_\_\_ - \_\_\_\_\_

14. \_\_\_\_\_ - \_\_\_\_\_

15. \_\_\_\_\_ - \_\_\_\_\_

16. \_\_\_\_\_ - \_\_\_\_\_

17. \_\_\_\_\_ - \_\_\_\_\_

18. \_\_\_\_\_ - \_\_\_\_\_

19. \_\_\_\_\_ - \_\_\_\_\_

20. \_\_\_\_\_ - \_\_\_\_\_

In this unit I have learned:

1.- \_\_\_\_\_

2.- \_\_\_\_\_

3.- \_\_\_\_\_

I would like to learn more about: